

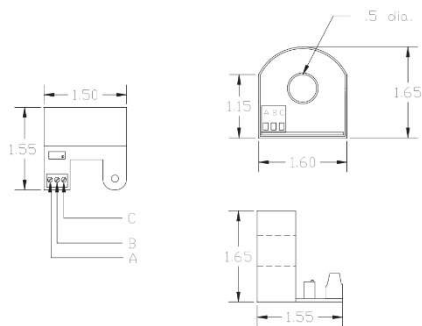
138 / 138A Series Current Transducers



- 0-10Vdc output signal proportional to the AC load current
- Measures load currents up-to 100 amps
- Output voltage adjustable by multi-turn pot
- Overvoltage protection
- Attaches to HBControls Power Controllers
- 138A series is Compatible with Crydom CM series relays and HBC C series stripwire Power Controllers
- For use with Analog and Digital meters, PLC's and PC's
- Optional DIN mount available (-DIN suffix)

Part Number	Range (amps)	Output Voltage	Comments
HBC-138-103	0-100	Adjustable to 10Vdc at full scale	Output not set at factory
HBC-138-10	0-10	10Vdc at full scale	10Vdc set at factory
HBC-138-20	0-20	10Vdc at full scale	
HBC-138-30	0-30	10Vdc at full scale	
HBC-138-40	0-40	10Vdc at full scale	
HBC-138-50	0-50	10Vdc at full scale	
HBC-138-60	0-60	10Vdc at full scale	
HBC-138-70	0-70	10Vdc at full scale	
HBC-138-80	0-80	10Vdc at full scale	
HBC-138-90	0-90	10Vdc at full scale	
HBC-138-100	0-100	10Vdc at full scale	

Part Number	Range (amps)	Output Voltage	Comments
HBC-138A-103	0-100	Adjustable to 10Vdc at full scale	Output not set at factory
HBC-138A-10	0-10	10Vdc at full scale	10Vdc set at factory
HBC-138A-20	0-20	10Vdc at full scale	
HBC-138A-30	0-30	10Vdc at full scale	Adjustable as required for higher accuracy
HBC-138A-40	0-40	10Vdc at full scale	
HBC-138A-50	0-50	10Vdc at full scale	Accuracy; +2%
HBC-138A-60	0-60	10Vdc at full scale	
HBC-138A-70	0-70	10Vdc at full scale	Linearity; +3%
HBC-138A-80	0-80	10Vdc at full scale	
HBC-138A-90	0-90	10Vdc at full scale	2mA maximum output current
HBC-138A-100	0-100	10Vdc at full scale	



HBC-138A Series

